

# 969 Industrial Road, Suite J SAN CARLOS BUSINESS PARK

## FOR LEASE

± 3,200 SF Office / Warehouse



- 5 Private Offices with New Paint and Carpet
- ±1,100 sq.ft. of Warehouse Space
- Multiple Storage Rooms and Mezzanine Space
- Desirable Corner Unit with 2 Grade Level Doors
- Highway 101 Frontage with High Visibility
- Professional Business Park Setting
- Immediate Access to Highway 101
- Monument Signage Available
- Close Vicinity to Popular Local Amenities
- \$1.20/sq.ft./mo. NNN



### Contact Information:

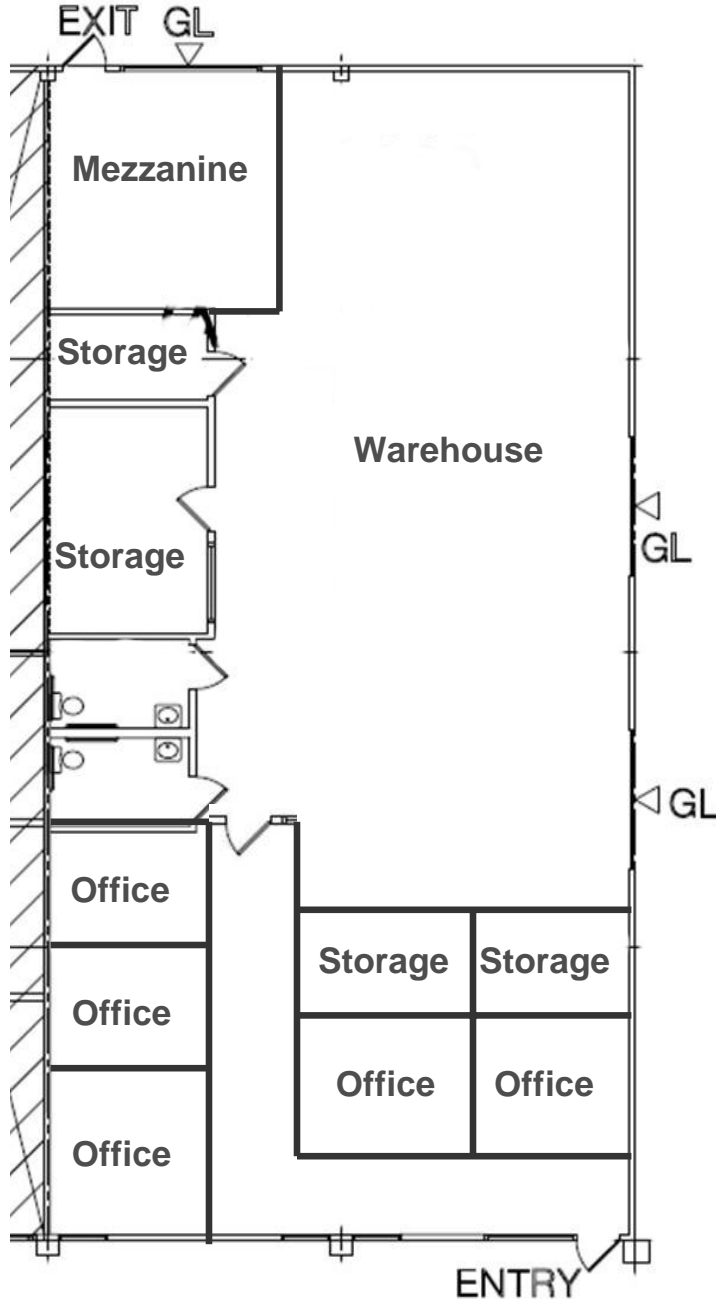
**Robert McSweeney**  
Senior Vice President  
Bob.McSweeney@cbre.com  
650.577.2928

**Jose Bustamante**  
Senior Associate  
Jose.Bustamante@cbre.com  
650.577.2914

# 969 Industrial Road, Suite J SAN CARLOS BUSINESS PARK

# FOR LEASE

## ± 3,200 SF Office / Warehouse



NOT TO SCALE



© 2009 CB Richard Ellis, Inc. We obtained the information above from sources we believe to be reliable. However, we have not verified its accuracy and make no guarantee, warranty or representation about it. It is submitted subject to the possibility of errors, omissions, change of price, rental or other conditions, prior sale, lease or financing, or withdrawal without notice. We include projections, opinions, assumptions or estimates for example only, and they may not represent current or future performance of the property. You and your tax and legal advisors should conduct your own investigation of the property and transaction.